

Contact Us



Email Us

Technical Support
support@iliferobot.com



Tweet Us

@ILIFEROBOTICS
Mon-Fri: 9:00am - 18:00pm
Sat: 9:00am - 12:00am (GMT+8)

Quick Start Guide



ILIFE Customer Service

Toll-Free Number:

1-800-631-9676 (USA and Canada)

Mon-Fri: 9:00^{am} - 18:00^{pm}

+86-75521005927 (Outside USA and Canada)

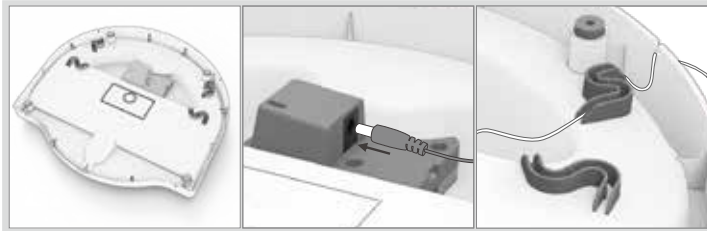
Mon-Fri: 9:00^{am} - 18:00^{pm} Sat: 9:00-12:00(GMT+8)

1. Charging

• Recharge the robot on the charging dock.

* The robot can't return to charging dock automatically, and needs to be manually recharged.

■ Step1

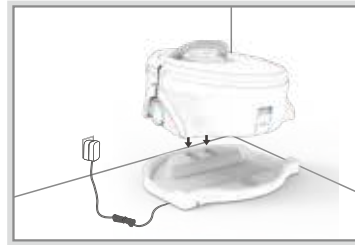


- 1 Turn the charging dock upside down.
- 2 Plug in the adaptor.
- 3 Secure wires around the cable through.

■ Step2

- Put the charging dock at somewhere dry and safe, and manually take the robot back to charging dock for recharge.

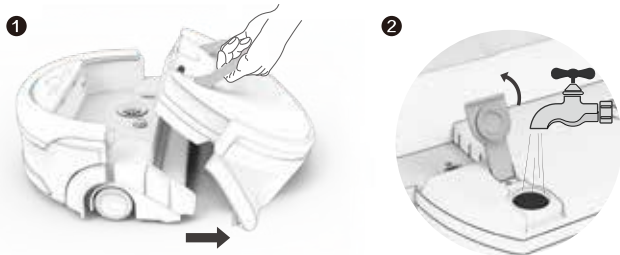
Voice alert: Charging will start soon.



2. User Guide

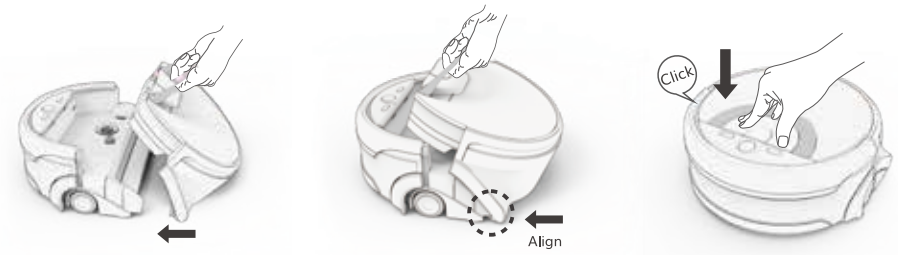
■ Fill the water tank

- Press down the water tank release button, pull the handle up to take out the tank.
Turn the water tank upside down.
- Open the clean water tank cap and fill up the tank with clean water.
* Do not add neutral detergent.



Note: Do not use distilled or purified water.

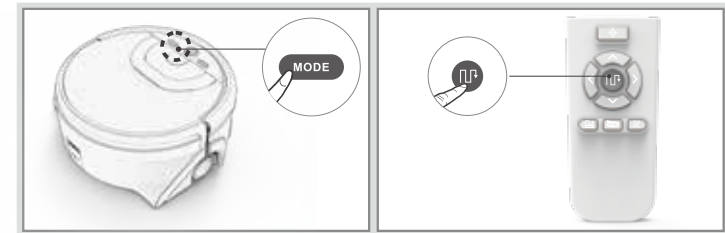
■ Install the water tank



- 1 Put the scraper at the bottom of the robot with the handle.
- 2 Align the ends and move the water tank to insert into the main body.
- 3 Press down, and 'click' will be heard if installed properly.

3. How to Start

- On: Press for 1s, and loose when the sound [beep] heard.
* Voice alert "Please select mode" when the button light is on.
Off: Press for 3s, and loose when the sound [beep] heard.
- Please press the MODE button to switch cleaning modes. When green light flashing, tap MODE constantly till the needed cleaning mode is on.
Alternatively, press the specific cleaning mode button on the remote control.
- The robot will shutdown if no command is received in 3 mins.



4. Attention

- Please clean the water tank, roller, scraper and the filter after each use.



- 1 Remove the water tank from the robot and rinse with water.
- 2 Remove the cleaning roller and rinse with water.
- 3 Remove the filter from the water tank and rinse with water.